



**C2R2 MAX**

Version 03 – 02 April 2009

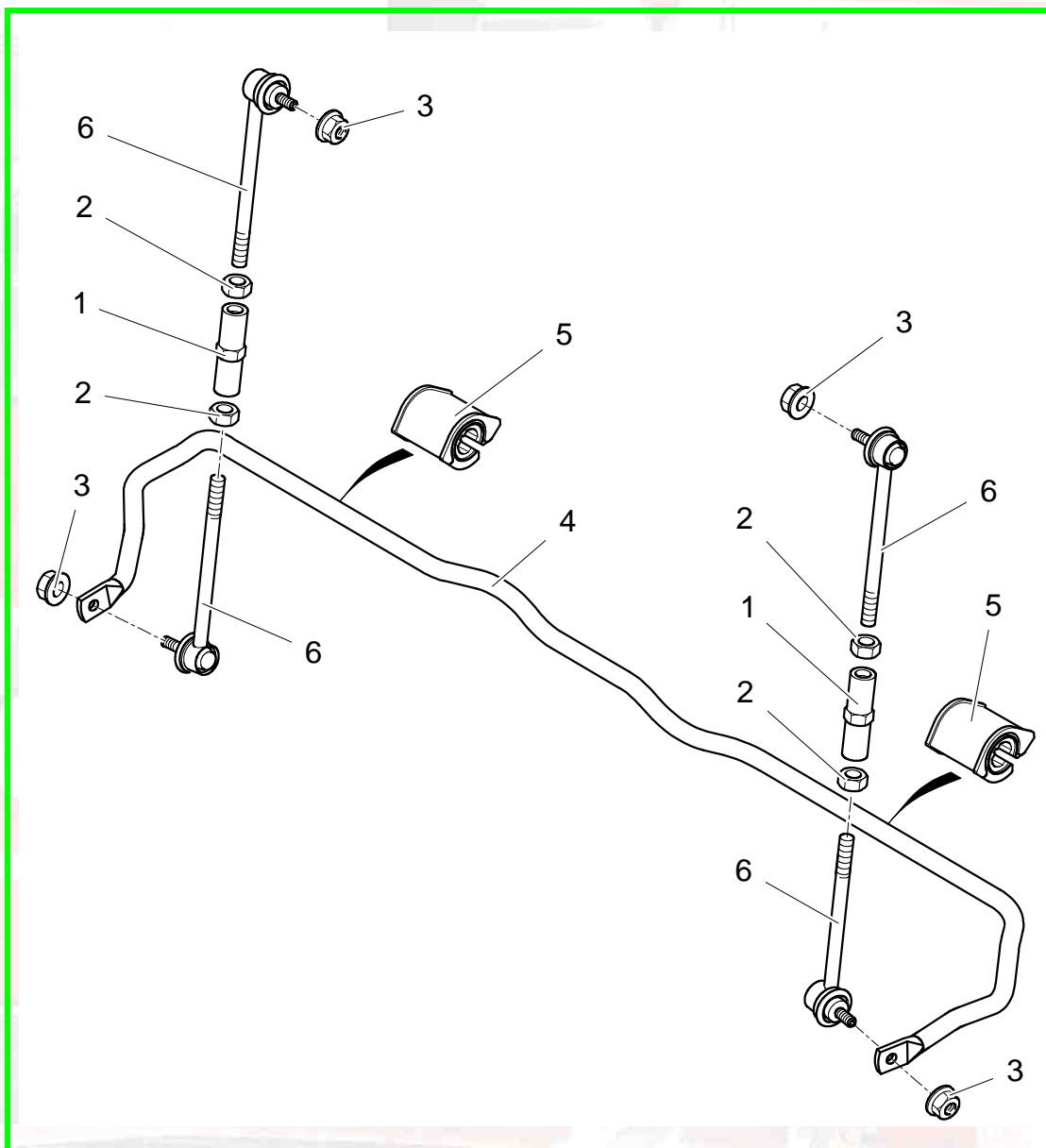
***E15***

***FRONT ANTI-ROLL***



# C2R2MAX

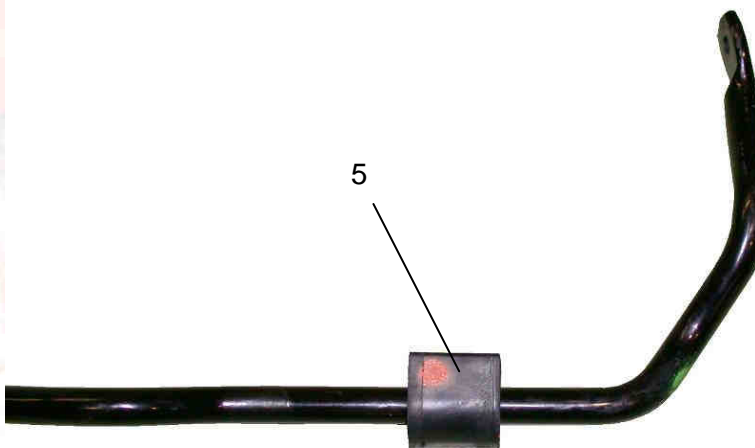
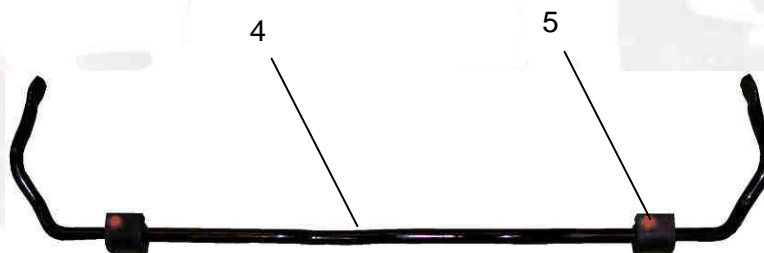
Version 03 – 02 April 2009



Ref	Part number	Qty	Description
1	1E1562792B	2	Anti-roll link rod sleeve
2	BCSP7244K7	4	Sleeve counter nut
3	BCSP6936A2	4	Anti-roll ball joint nut
4	BCSP5081J0	1	Asphalt anti-roll bar Ø 21mm
4	BCSP5081G1	1	Asphalt anti-roll bar Ø 20mm (option)
4	BCSP5081G4	1	Dirt track anti-roll bar Ø 18mm
5	BCSP5094A5	2	Asphalt anti-roll bar mounting Ø 20 and 21.
5	BCSP5094A9	2	Dirt track anti-roll bar mounting Ø 17 and 18
6	1E1563049B	4	Asphalt anti-roll link rod end-piece L=135mm
6	1E1563050B	4	Dirt track anti-roll link rod end-piece L=115mm

**Anti-roll bar assembly.**

Fit the silent-blocks (*ref. 5*) onto the anti-roll bar (*ref. 4*), in their original positions.



**E15**  
**Front anti-roll**



**E**  
**FRONT END**  
**AND REAR END**



Fit the assembled anti-roll bar onto the cradle, using the two removable standard mountings and their screws.



242

5.5 m.kg

### Preparation and assembly of the adjustable anti-roll link rods:

**N.B.:** the adjustable link rods have been designed so as not to alter the weight per wheel balance when connecting the front anti-roll bar.

Because of this, the operation described below will be performed **after** adjusting the axles and the weight per wheel (always adjust with the anti-roll bar disconnected).

#### Surface: Asphalt.

Fit a link rod definitively, having first adjusted the centre-to-centre dimension of the two ball joints to **285mm**. Be sure to respect the orientation of the ball joints, opposed to each other (see photo opposite).

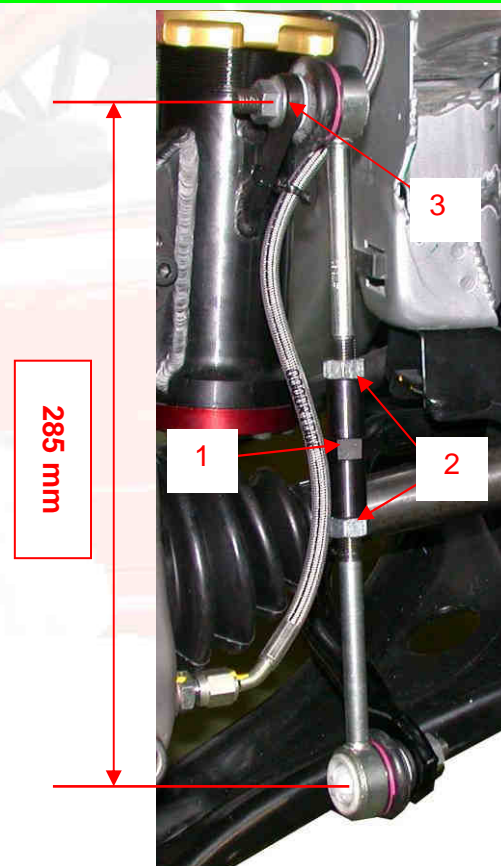
Connect this link rod to the anti-roll bar and to the strut. The side (left or right) does not matter.

Fit the second link rod, using the same centre-to-centre dimension, but without tightening the ball-joint counter nuts ([ref. 2](#)).

Connect this link rod to the anti-roll bar and screw / unscrew the sleeve ([ref. 1](#)) such that the ball joint goes **freely** into the strut.

Tighten the ball joint counter nuts ([ref. 2](#)).

**N.B.:** The ball joint nuts ([ref. 3](#), **4.5 m.kg**) are specially selected for easy assembly / disassembly in service (screw remover). Do not use lock nuts.





**Surface: *Dirt***

Same procedure as for asphalt, respecting the following dimensions:

- Link rod end-pieces: **115mm** (@ld 135mm).
- Assembled link rod centre-to-centre distance: **245mm** (@ld 285mm).